

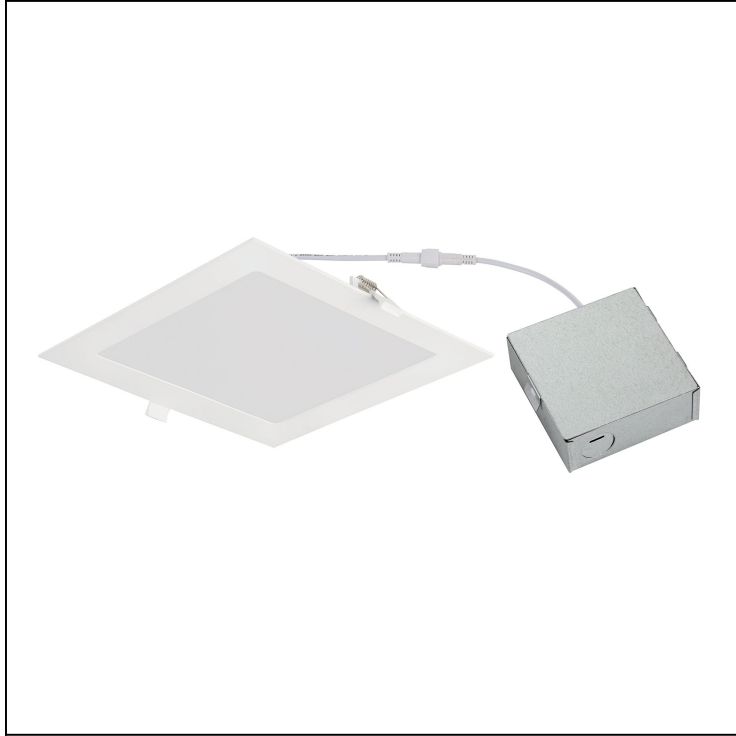
**MODEL #:** EV814SWMVWH50

**FINISH:** White

**DESCRIPTION:** Square Integrated LED Slim Panel Downlight, 5000K

---

## BASIC FEATURES & INFO



- 8 in. square integrated LED canless slim panel downlight in white
- Produces 1372 Lumens of 5000K light while using 18.5W of power
- Use in hallways, kitchens, bathrooms, offices, and much more
- Hardwire to a 120/277V power source
- White polycarbonate lens for durability and diffuse light
- Provides a bright 5000K light
- Easy to install - instructions and hardware included
- 5-year warranty and 50,000 hour expected LED life

## OPTICS

<b>Lens Material</b>	PC
<b>Lens Color</b>	White

## DIMENSIONS

<b>Fixture Width (in)</b>	8.78"
<b>Fixture Height (in)</b>	0.43"
<b>Fixture Depth (in)</b>	8.78"
<b>Net Weight (lb)</b>	1.78 lbs

## LAMPING

<b>Light Source</b>	Integrated LED
<b>Bulbs Included</b>	Integrated
<b>Wattage</b>	18.5
<b>Voltage</b>	120/277
<b>Dimming</b>	0-10V
<b>Led Cri</b>	90+
<b>Led Life Hours</b>	50,000
<b>Lumens</b>	1,372
<b>Efficacy</b>	76
<b>CCT</b>	5000K
<b>Beam Angle Degrees</b>	115.8
<b>Power Factor</b>	0.9

## CERTIFICATIONS & RATINGS

<b>Dampness Rating</b>	Damp
<b>Warranty</b>	5 year
<b>Electrical Certification</b>	cETLus
<b>Energy Star</b>	Yes
<b>Title 24</b>	No
<b>Title 20</b>	No